

25 June 2024

The Hon. Penny Sharpe MLC

Minister for Heritage and the Environment

Dear Penny Sharpe,

For your urgent attention: request for an **Interim Heritage Order on the Powerhouse Museum Complex (PHM) and its buildings, interiors, and significant movable heritage items and relics particularly related to their settings in the Galleria, the Engine House and the Boiler Hall.**

We write on behalf of the Powerhouse Museum Alliance to ask you to exercise your powers under Part 3 (24) (1) and (27) (a and b) of the Heritage Act 1977 to impose an Interim Heritage Order (IHO) on the **Powerhouse Museum Complex and its buildings, interiors and exhibition settings, including identified relics and movable items, both *in situ* and significant movable heritage items removed in recent years from the Galleria, the Engine House and the Boiler Hall.** This application includes:

- The 1785 Boulton and Watt rotative steam engine, and No.1 locomotive, tender and the first, second and third class carriages in the Galleria. Each one of these items is of international significance.
- The *Steam Revolution* installation in the Engine House notably the steam engines working under live steam, some of which have already been disconnected and removed from their setting. This installation with the relics and movable heritage items is of national significance.
- The *Transport, Flight and Space* installation in the Boiler Hall containing transport, aviation and space relics and movable items of outstanding significance, including the Catalina Frigate Bird II, and the 1914 Bleriot XI monoplane, both of international significance and rarity.

**We ask that the Interim Heritage Order requires a stop on the internal and external demolition of the PHM, and the removal of any further objects, relics and movable heritage items from the Powerhouse Museum Complex until there is an independent investigation and assessment of significance of the PHM Complex and associated relics and movable heritage items in their exhibition settings,** along with the preparation of a Conservation Management Plan for the Powerhouse Museum Complex prepared by a reputable conservation architect.

The relics and movable heritage items in the attached lists to be covered by an Interim Heritage Order are of outstanding state, national and international significance. They are intrinsically related to the Powerhouse Museum's history, architecture, design, interiors and museological conception; and are central to the PHM's renowned exhibition installations in their significant settings and interiors. They are also an integral part of the outstanding historic, cultural and social significance of the Powerhouse Museum Complex, and its history and context in Ultimo since 1893 as a nationally renowned museum and as Australia's only museum of applied arts and sciences.

We make this **urgent request** having regard to the objects of the 1977 Heritage Act to promote understanding of the State's heritage, to encourage conservation, to provide for the identification and registration of items of State heritage significance, and **to provide interim protection of items – including buildings, interiors, relics and movable items of state significance.**

An urgent Interim Heritage Order is required to protect the Powerhouse Museum Complex and the attached list of relics and movable heritage items of outstanding significance related to the PHM's buildings and interiors. This is **to prevent further internal and external demolition of the fabric of the building, and the removal of significant relics and movable heritage items, to enable a proper assessment of significance, and the conservation of the Powerhouse Museum Complex's heritage, including interiors, exhibition settings and movable heritage items and relics, to be guided by the preparation of an authoritative Conservation Management Plan for the Powerhouse Museum Complex.** We are advised that the management of MAAS has brought forward the removal of No.1 Locomotive, tender and carriages to next Monday July 1, to pre-empt any conditions imposed as part of the EIS assessment, including advice from the NSW Heritage Council, and to stymie public protests about the extensive demolition of the Powerhouse Museum. They have also brought forward the dismantling and removal of the Catalina Frigate Bird II. This will involve separation of the wings from the fuselage and **demolition of part of the south end of the Boiler Hall, which is state heritage listed.** None of this work should be happening before assessment of the EIS.

## **1 Key Issues and Urgent Heritage Risks to the Powerhouse Museum Complex**

1.1 As you will be aware, the Powerhouse Ultimo Revitalisation SSD- 67588459 is now under assessment by the Major Projects team at the Department of Planning. Over eight consultations since 2020, and in hundreds of submissions to both the current and previous Powerhouse Ultimo SSDs, and to two Legislative Council inquiries, and the Heritage Council's two listing processes, museum experts and the community have identified the outstanding significance of the three major installations listed above. They are significant as *in situ* assemblages in the PHM's significant interiors and heritage buildings, and as individual relics and movable heritage items of state, national and international significance. These relics and movable heritage items are **intrinsically related to their settings in the PHM**, a renowned museum which was purpose designed over 1980-88 to exhibit these collections. An important dimension of their significance is the exhibition and narrative context of these relics and movable heritage items, **including the relationship between objects**, revealing the evolution of the transformative power and transport technologies of the industrial revolution and beyond. These installations are central to the statutory obligations of the MAAS Act 1945. They are also an integral part of the significance of the Powerhouse Museum Complex as **a museum about itself** – a museum that has at its heart narratives of the power and transport technologies exhibited in a complex of industrial heritage buildings related to the power and transport history of NSW.

1.2 Not waiting for the outcome of the EIS assessment process, or the import of the proposed state heritage listing of the Powerhouse Museum Complex on the SSD plans, the management of MAAS appear to be pre-empting the SSD assessment. They have embarked on the unnecessary and hasty removal of *in situ* relics, including steam engines that are plumbed into the building's purpose designed system, along with relics and movable heritage objects that remain in the PHM. This is in addition to the prior removal of significant movable heritage items from the above installations in recent weeks, months and years, where their outstanding significance is intrinsically related to the PHM and its cultural and heritage values as a museum.

1.3 On the 20 November 2020 I advised the MAAS CEO in writing and in subsequent meetings in early 2021, that the scope of works for the Conservation Management Plan should include an assessment of the three major *in situ* exhibition installations; being the Galleria with the Boulton and

Watt and No 1 Loco; the *Steam Revolution* installation in the Engine House, with the core group of steam engines working under live steam; and the *Transport, Flight and Space* installation in the Boiler Hall with a core group of significant transport, aviation and space items and internal structures related to the Powerhouse Museum's history, purpose, design conception, and its museology and underpinning narrative. **These installations were part of the design conception of the PHM from 1979. They are interdependent with the significance of the buildings as a museum which was purpose designed, restored, and adapted to house these outstanding collections in spatially and conceptually resonant settings associated with the themes of power, transport, industry, technology and design.** As a recognised expert in the assessment of objects and movable heritage, I advised the MAAS CEO that these installations and their associated relics and movable heritage items were of State heritage significance, that they should be assessed as part of the CMP, and should be included in a new listing of the PHM since the government had announced on 4 July 2020 that the PHM was saved and would **continue to display technology, science, engineering and design.**

1.4 The response from MAAS was to pre-emptively demolish half the *Transport, Flight and Space* exhibition in March 2021, without following standard conservation advice that the remaining objects should be protected from dust and debris. The resulting demolition and concrete dust damaged objects and the museum's HVAC system. As noted in an email of 23 March 2021 to the MAAS CEO ... *I was shocked to see the half demolished Transport, Flight and Space installation, especially after I had flagged in various meetings with you and Annette Pitman, and in an email on the CMP, that we believed the core of this exhibition, its most significant objects and major design elements should be state heritage listed. The well-established convention with heritage practice is to assess significance before making major changes. This installation was recognised as one of the world's great exhibitions of transport history. I am disappointed you did not mention the plans to gut this significant exhibition during our recent meetings.* A month later Create NSW terminated the contract of Alan Croker of Design 5 for the PHM CMP. Alan Croker is one of Australia's leading conservation architects, recognised for his award-winning work on comparable conservation projects including the White Bay Power Station, the Sydney Opera House Concert Hall renewal, and the Tasmanian Museum and Art Gallery masterplan and CMP. **The Powerhouse Museum still has no CMP for what the NSW government promised would be a heritage revitalisation to save the Powerhouse Museum and the Wran building.** This alone is grounds for an IHO.

1.5 In our view the management of MAAS is intent on the heedless demolition of the PHM's interiors, its remaining exhibitions, and the removal of its most significant and fragile *in situ* relics and movable heritage items, **without a proper assessment of significance**, to establish facts on the ground before the recommended SHR listing of the Powerhouse Museum Complex is gazetted, and in advance of the Department of Planning's assessment of the Powerhouse Ultimo Revitalisation SSD. **This is very poor conservation practice from any organisation, let alone from this state's major heritage museum.** In our view MAAS is not free to operate outside the statutory provisions of the NSW Heritage Act in relation to items of state significance. We also note the failure of the management in recent years to maintain the PHM buildings and to prevent water entry, in line with its statutory obligations. And now the museum is demolishing interiors and parts of the building, and removing and dispersing relics and movable heritage items that are central to the significance of the Powerhouse Museum Complex. MAAS has a conflict of interest since it is the applicant/ proponent of the Powerhouse Ultimo Revitalisation which entails the extensive gutting and demolition of the

PHM and its exhibition spaces, and the dispersal of its power and transport collections that are an integral part of the significance of the Powerhouse Museum.

## 2. Government Policy, Conservation and Heritage Assessment Policy and Process

2.1 The public commitments by the Minister for the Arts on 2 September 2023 that Labor would save the Powerhouse Museum, save the Wran building, preserve the Wran legacy, and fund a **heritage revitalisation of the Powerhouse Museum are NOT part of the objectives of the Powerhouse Ultimo Revitalisation SSD EIS**. The plans on exhibition **do not give effect to the government's explicit policy commitments for the Powerhouse Museum**. The Powerhouse Ultimo Revitalisation SSD is a scheme for the demolition and erasure of all trace of the Powerhouse Museum, including the large-scale demolition and extensive alteration of the Wran building and Galleria, the demolition and erasure of all trace of the PHM's Sulman award winning design and heritage adaptation, and the reduction of the PHM's purpose designed exhibition spaces by 75%, to just three large galleries for unstated contemporary events and uses. No part of the actual Powerhouse Museum will be untouched. Nor will be the PHM survive in any recognisable form as a museum. **The Powerhouse Ultimo Revitalisation plans on exhibition are inconsistent with the clear policy statements that Labor has made about saving the Powerhouse Museum and the Wran building before and after the 2023 state election.**

2.2 The NSW Heritage Council flagged this concern in its 7 June submission to the EIS, noting the application *should clearly demonstrate the ability to adequately accommodate the Museum's operations and curatorial display including all the permanent displays*. We agree. The IHO is required to allow time for a CMP and assessment of the identified relics and movable items to provide a framework for the renewal of the PHM's operations and permanent displays.

2.3 Unfortunately, the EIS has nothing to say about the future of the 'Powerhouse Ultimo' site **as a museum**. There is no museum plan, no exhibition plan and no design brief which might explain the rationale for the extensive demolition of 75% of the PHM's international standard exhibition spaces for purposes which are unrelated to any museum, operational or visitor needs, not to mention the statutory obligations of the MAAS Act. The only commitment that MAAS has made is that just **three large objects will be returned to the former Powerhouse Museum** after its 'revitalisation', deprived of narrative context and relationship between the movable heritage/ *in situ* items and the spaces which were purpose designed and adapted to display these treasures. Furthermore, the plans in the EIS do not show where or how even these three internationally significant objects might be displayed.

2.4 The Heritage Council submission also notes its earlier decision of 4 October 2023 and 8 May 2024 to **NOT list the Powerhouse Museum collection**, noting that it is managed by an appropriate statutory body. The Heritage Council's 7 June submission to the Powerhouse Ultimo Revitalisation SSD *recognises the inter-relationship of the purpose-built museum and its permanent displays*, although they have not proposed the inclusion of the *in situ* relics and movable heritage items in the SHR listing of the Powerhouse Museum Complex. As explained below, in our view this is a mistake. The PMA asked to speak to the Heritage Council about the listing proposal and the risks to the PHM's significant *in situ* relics and movable heritage items but we still waiting for a response. We note the project proponents (MAAS, INSW and the architects and heritage consultant) have made three presentations to the Heritage Council. In our view the proponents have misrepresented the scale and impact of the demolition and gutting of the PHM in the Powerhouse Ultimo Revitalisation

SSD and misled the public about the scale and impact of the demolition program in public statements and published 'Fact Sheets'. There is no clear demolition schedule in the EIS. There are nine pages of demolition plans but even here it is difficult to understand their scope and impact.

2.5 As part of this request for an **urgent IHO on the Powerhouse Museum Complex and its notable *in situ* relics and movable heritage items**, we ask that the Heritage Council revisit the listing decision for the **most significant relics and movable heritage items**. That is, not listing the whole PHM collection but the small group of identified relics and movable heritage items of outstanding significance that are intrinsically related to the design conception, heritage and cultural significance of the PHM Complex. This should follow a proper assessment of significance of the *in situ* relics and movable heritage items, and a credible Conservation Management Plan for the Powerhouse Museum Complex. This is essential to give effect to the government's stated policy of a heritage revitalisation of the PHM and saving the Wran building.

2.6 While the NSW government made explicit commitments to save the Wran building and preserve the Wran legacy, the Powerhouse Ultimo SSD entails the extensive demolition of the Wran building and Galleria. **This is not explained or detailed in the EIS.** The plans substantially demolish the building inside and out, destroying its design conception, its landmark qualities, its interiors and museum functions. There is no public benefit or museum purpose behind this scheme, quite the opposite. The Galleria is demolished at the southern end by 15 metres, and the Wran building by 11 metres. All the internal ramps that provide seamless access and views of exhibitions over three levels are demolished, significantly reducing accessibility and visitor flow. Two theatres are demolished. All the education spaces are also demolished. Two levels of mezzanines and the board room are demolished for no obvious reason. The arc of the roof form of Wran building is completely altered. The size of the Wran building's exhibition space is reduced from 1,800sqm to 1,200 or 1,400sqm for no apparent purpose. The Galleria, which was purpose designed to display the Boulton and Watt and No.1 Locomotive, tender and carriages, with the floor specially reinforced to carry the weight of the locomotive, becomes a brick lined staircase with the Boulton and Watt stuck up the back like an unwanted relic of the real PHM, see following PMA before and after rendering. Instead of the lightness and transparency of the Wran building and galleria, referencing the design language of nineteenth century railway stations and exhibition buildings, what's left is clad in brick and turned into a dark empty volume. None of this heedless demolition and intervention is necessary to create an entry from the Goods Line.

2.7 As designed, the Wran building is one of the world's great museum atriums of the 20<sup>th</sup> century; a social space for meeting, greeting, anticipation, orientation, and the starting point for the visitors' journey through the museum. In its place Powerhouse Ultimo offers a dingy concierge desk, an entry from the overshadowed courtyard, without any sense of drama or cultural anticipation. The final and worst impact is that the PHM is hidden behind a row of shops and left with no front door, after 130 years as a cultural landmark on Harris St. It is inconceivable that any other major public museum would treat its heritage and museum buildings with such disrespect. All great museums show the evolution of their history in the fabric of their buildings and major exhibition installations, recognising that the building is the museum's No.1 exhibit, and part of its identity and brand. In the Powerhouse Ultimo SSD, the museum's own history is set for erasure and demolition. This is a wasteful and destructive project likely to cost more than \$400m to deliver only a quarter of the flexible exhibition spaces endowed by the Wran government. It is contrary to the explicit promises by the Minns government to save the PHM, save the Wran building, preserve the Wran legacy and

ensure a heritage revitalisation of the Powerhouse Museum. And it against any common sense concept of value for money to demolish a purpose designed museum that is only 35 years old.

### 3. Interim Heritage Order Request

3.1 The *in situ* relics and movable heritage items on the attached lists are of undoubted state, national and international significance. We request the IHO includes an independent assessment process with input from recognised experts to investigate the significance of these relics and movable items in their setting and context in the PHM Complex.

3.2 These items are not just intrinsically related to their exhibition settings and purpose designed interiors and spaces in the Powerhouse Museum Complex. They are also an integral part of the history of the Museum of Applied Arts and Sciences in Ultimo and its context and relationship with Sydney Technical College. Many of the transport items and steam engines were conserved and restored in whole or in part by students and lecturers at Sydney Tech, working with museum curators.

3.3 The PMA, conservation and heritage machinery experts, and our international heritage partners, are extremely concerned about the risks of moving these fragile, weighty items, **and about the plans for their future display**. This is particularly the case for the Boulton and Watt and No.1 Locomotive, tender and carriages in the Galleria, as well as the working steam engines in the Engine House and notable *Transport, Flight and Space* objects in the Boiler Hall. The large transport and power collections cannot be moved in and out of the museum willy nilly. It took eight years to plan, design, conserve and install the transport and power collections in their purpose designed settings, with the steam engines operating on live steam. The haste and secrecy around the removal of the items, and the lack of a museum or exhibition plan as part of the EIS shows that there is no intention for these collections to be returned to the museum that was purpose designed for their display.

3.4 We ask you as the Minister for Heritage, with advice from the Heritage Council, to **adopt a precautionary and risk-based approach to the Interim Heritage Order to allow time for investigation and assessment of the relics and movable heritage items in their context in the PHM Complex**.

3.5 These are conservation, assessment and heritage management issues that are outside the scope of the EIS and the usual boundaries of an SSD assessment. They will not otherwise be considered without your action, despite the government's promised heritage revitalisation. The NSW Heritage Council and you as Minister for Heritage have a statutory responsibility to protect a state heritage listed place, **with its significant contents**. The Burra Charter Articles 10 and 11 requires that **contents, fixtures and objects which contribute to the cultural significance of a place should be retained at that place**. The cultural significance of the Powerhouse Museum is intrinsically related to the power and transport collections for which the museum was purpose designed. The PHM is perhaps the only museum in Australia that was purpose designed to exhibit specific objects and collections in particular purpose-designed settings and spaces that are thematically resonant and related to the collections. These installations are of outstanding social value, evidenced in hundreds of submissions to two EIS processes, two Heritage Council listing processes, two Legislative Council inquiries, and most recently comments related to 7,200 signatures to the change.org petition.

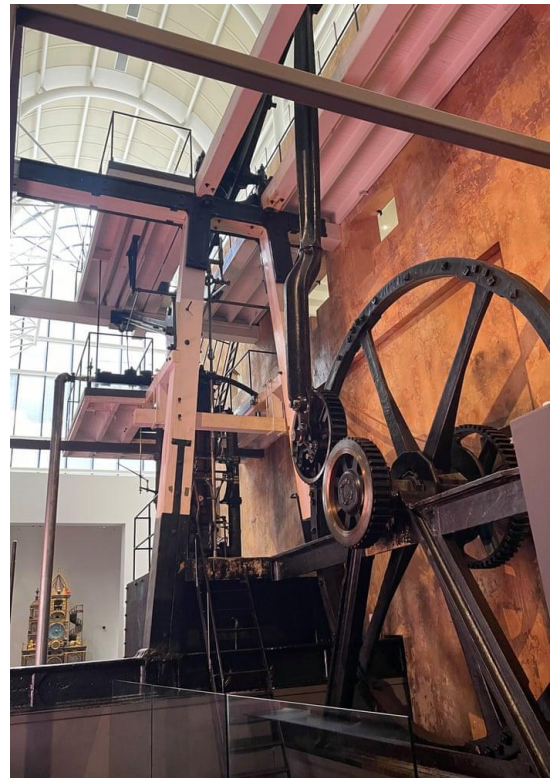
3.6 The Heritage Council has endorsed the **Burra Charter**, to underpin its decisions regarding changes to State Heritage Register listed items. Burra Charter principles emphasise **a cautious**

**approach;** Articles 3.1 and 3.2. The Burra Charter Process, Article 6, calls for investigation, assessment and conservation policies **before** making decisions. Furthermore, **where the use of a place is of cultural significance it should be retained, Article 7.1.** The cultural significance of the Powerhouse Museum is central to the use of the place as a *museum*. Given the NSW government's public promises to save the Powerhouse Museum, the PHM does not need to be adapted for other creative uses of arguably lower cultural significance than its role as a museum showing the public's collections of state, national and international significance. The extensive demolition of the PHM, stripping out all the exhibitions and collections, entirely gutting its interiors, and reducing its exhibition spaces by 75%, **is not consistent with the use of the place as a museum.** Nor is the promise to return just three objects to the PHM consistent with any museum revitalisation or renewal project. The management of MAAS has made no secret of its intention to turn the former PHM into a creative industries organisation, ignoring its statutory obligations and the public's interest in its most significant collections which are central to the industrial, power and transport history of the site.

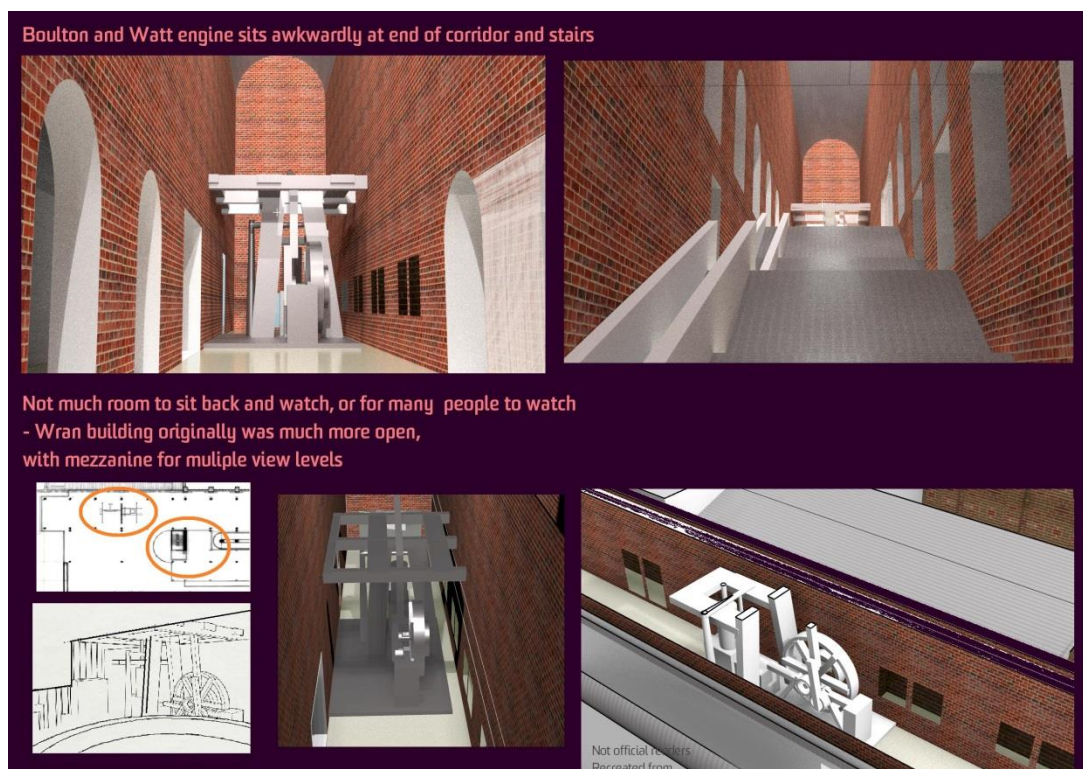
3.7 The Powerhouse Museum Complex was purpose designed to display the power and transport items and collections in settings and installations that are spatially and conceptually resonant for these collections. The whole investment case for the PHM project in 1978-79 was about a home for these collections. **It would be anomalous if the Powerhouse Museum Complex was listed on the SHR without also listing the most significant *in situ* relics and movable heritage items in the specific spaces for which the museum was conceived, built, designed, adapted and restored.** As noted above and in our attachments, these are treasures of national and international significance that merit and need statutory protection given the unprecedented risks under the current SSD. The 1785 Boulton and Watt engine is literally priceless. It is one of just three surviving rotative engines from the very beginnings of steam technology; and of the three it is the oldest and the only one to be operating under live steam. International heritage machinery experts have warned about its fragility and that it should not be moved. I attach the PMA's rendering of its bleak future marooned in the brick catacomb of the former Galleria.

3.8 As noted there is no Conservation Management Plan in the EIS, as required. Despite the government's public statements on the heritage revitalisation of the Powerhouse Museum, **no attempt has been made to conserve, repair or restore any part of the Powerhouse Museum** which under the SSD will be demolished to the bare brick walls. (What the EIS calls heritage restoration and 'reinstatement' is in fact the erasure of heritage layers to an imaginary form that never existed, even in 1979.) There is a draft CMP in the previous Powerhouse Ultimo Renewal SSD which was withdrawn by the Labor government. It was widely criticised by key agencies and in expert submissions. Incredibly the Heritage Impact Statement (HIS) in the current SSD EIS does not find any cultural significance in the Powerhouse Museum Complex as a unique cultural institution, with a priceless collection, that has had a national impact since it opened in the former Ultimo power station in 1988. The HIS see the PHM as an empty box. It is entirely out of step with the majority of expert and community submissions. The radical demolition and erasure of all trace of the Powerhouse Museum in the SSD plans is inconsistent with the core principle of the Burra Charter, **to do as much as necessary to care for the place, and otherwise change it as little as possible so that its cultural significance is retained.**





Views of the Galleria in the Powerhouse Museum displaying No.1 Locomotive, tender and carriages, and the 1785 Boulton and Watt rotative steam engine in an exhibition designed by Lionel Glendenning that allows every moving part of the engine to be seen at multiple levels and from all sides. The walls of the Turbine Hall are flooded with light. Below PMA renderings of what's left of the Galleria in Powerhouse Ultimo, looking more like the catacombs of Ultimo; the Boulton and Watt stuck up at the back of a corridor and staircase, a lost relic of the former PHM, unable to be seen properly from any angle. This dingy tunnel is unworthy of this priceless internationally significant object. The light steel structure is gone, the walls of the Turbine Hall are clad in new brick, the arched openings bricked up, along with both ends, destroying the transparency and the entire design conception of this space.





3.9 The EIS submission from the National Trust (NSW) echoes our concerns noting:

- The heritage significance of the Powerhouse Museum is not properly understood
- There is no Conservation Management Plan
- The detail of what is actually happening is not clear. There are thousands of pages of documentation, but not a single page outlining the exhibition and display areas and what they might be.
- The function of the museum has not been addressed. There is little reference to the current collection beyond the retention of three key items. There is not a single illustration or description of any of the actual internal spaces (entry points, circulation spaces, permanent or flexible exhibition spaces) that actually form the basis of any major museum; and
- The documents do not appropriately consider the place in the context of the proposed State Heritage Register curtilage expansion.

The Trust notes: *recent large-scale projects for the renewal of the Sydney Opera House, White Bay Power Station and Australian Museum have all been guided by a CMP. The Powerhouse cannot be an exception to this rule and the heritage renewal of this place needs to be guided by a Conservation Management Plan that includes its role and function as a museum since 1988.*

3.10 The National Trust's submission reinforces our concerns about the demolition of the *Steam Revolution* exhibition, concluding: *The Steam Revolution display should not be removed from the Museum.* The exhibition includes the 1837 Maudslay beam engine, the earliest provenanced steam engine known to have worked in Australia, and the only one its type in the world. The 1899 Engine House where the steam engines are displayed, working under live steam, includes the original floor and fittings conserved and repaired as part of the 1980s heritage adaptation. The Engine House was historically a separate and distinct space from the later adjoining Turbine Hall. Without a CMP or any investigation, the SSD plans will demolish the floor and all trace of the spatial definition between the Turbine Hall and the Engine House. Numerous submissions to the EIS have specifically identified the outstanding significance of the *Steam Revolution* exhibition, which installation the management is now hastily demolishing.

Far from revitalising the PHM's heritage buildings as the government promised, the Powerhouse Ultimo SSD is a radical museum and heritage demolition scheme. It reduces the former PHM to just three 'large volume presentation spaces' for unstated uses, in the process demolishing all the smaller scale exhibition galleries and mezzanines that were purpose designed for exhibitions of applied arts, design, decorative arts, social history, health and medicine, science, computing and technology. The creation of three large volume empty presentation spaces has nothing to do with any recognised heritage conservation process or museum need.

Finally, we note with regret the lack candour in public statements about the purpose and impact of Powerhouse Ultimo SSD. It is not true the development offers more and better exhibition spaces. It is not true the public will see more of the PHM's collections when there is a 75% reduction in exhibition space. It is not true there will be better access to the collections when the management of MAAS has evicted the collections from the PHM's purpose designed and accessible storage in the Harwood building, wasting at least \$127m on the unnecessary J store development at Castle Hill. And it is not credible that the Harwood building will be retained for the museum's use. Two governments have promised to save the Powerhouse Museum and yet four years on from that first public promise that the PHM was saved, the management is having another go at the museum's

demolition and erasure. After Labor's explicit promises in 2023 to save the Powerhouse Museum through a modest **heritage revitalisation** project, the government has a social contract with the community to honour this commitment and ensure that the PHM's heritage buildings, and the collection assets endowed by previous generations, are conserved, maintained and managed for current and future generations.

We seek your urgent intervention to place an Interim Heritage Order on the Powerhouse Museum Complex to give effect to the government's promised heritage revitalisation, to stop the further removal of relics and movable heritage items of outstanding significance, to stop the demolition of museum buildings and interiors, and to enable a proper assessment of significance and preparation of a credible CMP as a guide to the genuine heritage renewal of the Powerhouse Museum Complex.

Yours sincerely,

Kylie Winkworth

Jennifer Sanders

8 Yaralla St, Newtown, NSW 2042

65 Bouvardia St, Russell Lea, NSW, 2046

[wink8@bigpond.com](mailto:wink8@bigpond.com) 0474 178 999

[jenniferl.sanders@yahoo.com](mailto:jenniferl.sanders@yahoo.com) 0411 140 061

Attachments:

List of relics and movable heritage objects for protection under the IHO currently or formerly in the Galleria; the Steam Revolution installation in the Engine House and *Transport, Flight and Space* in the Boiler Hall

Boulton and Watt 1785 rotative beam engine

No. 1 Locomotive, tender and carriages

Central Station indicator board, 1906

PMA Objection to the Powerhouse Ultimo Revitalisation SSD EIS

Letter from Newcomen Society 3 March 2024

**Kylie Winkworth** is one of Australia's leading experts on the identification and assessment of movable heritage collections and objects, publishing extensively on the subject. With Roslyn Russell she is the co-author of *Significance 2.0: a guide to assessing the significance of collections*, 2<sup>nd</sup> edition, 2009; which is widely used in Australia and overseas. She is the author of *Connecting Collections: thematic studies of museum and heritage collections*, 2000; and co-authored with Meredith Walker *Places, Objects and People; retaining significant relationships; a discussion paper*, Museums Australia 1995. She has worked on heritage projects and collection assessments for national, state and community museums around Australia and has served on various heritage, museum and collection boards. She was a member of the National Cultural Heritage Committee from 2002-13; a Trustee of the Powerhouse Museum 1996-2003; and more recently a board member of the National Trust (NSW) 2021-23.

**Jennifer Sanders**